



THE MOTTE AND BAILEY PROJECT





Design vision:

To create a space that offers a wide variety of play opportunities for children of all ages and abilities, that references the area's history, harmonises with and enhances the existing natural setting and improves the biodiversity of the area, creating opportunities for children to connect with and learn from the natural world.



Space 1 - Primarily intended for younger children, with some features for older children.



Space 2 - Central space with a focus on older children, but also accessible to younger users up to a certain extent.

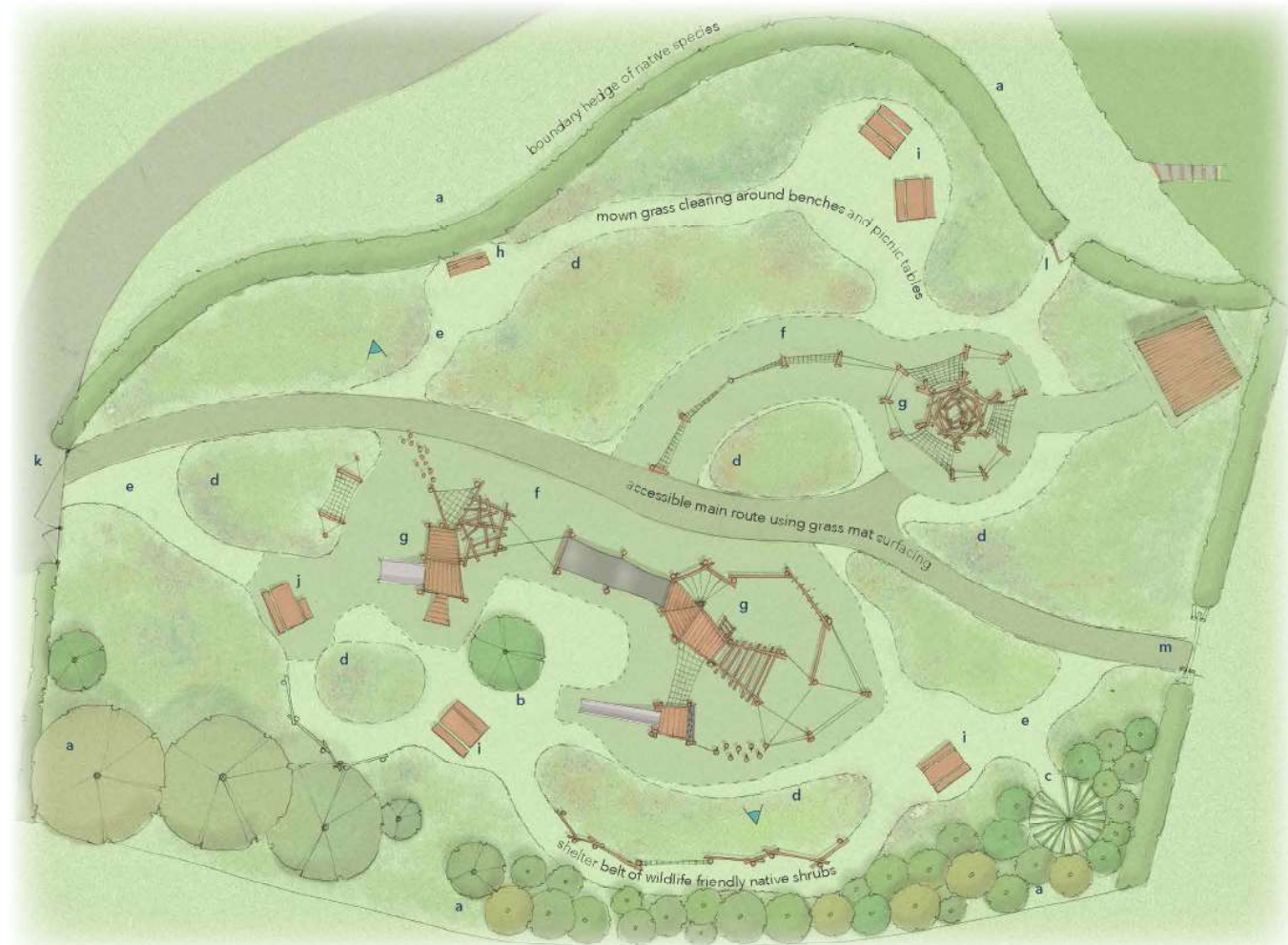


Space 3 - An intricate tangle of timber and setting with a nod to the idea of a rooks nest.

KEY

- a - Existing trees
- b - Proposed shade tree
- c - Living willow dome
- d - Areas of long grass and prairie planting
- e - Mown paths - 1.2 meter wide
- f - Grass mat safety surfacing (dotted line)
- g - Proposed play structures
- h - Comfy wooden bench with view across whole space
- i - Picnic bench
- j - Wheelchair accessible picnic bench
- k - Existing gate
- l - New wooden gates
- m - Log entrance arch
- ▲ - Viewpoint locations for visualisation

OVERALL SITE PLAN
SCALE 1:100 @ A1



SPACE 1 EQUIPMENT AND LAYOUT



Space 1 Primarily intended for younger children, with some features for older children.



Castle play tower with hut, ramp, slide and climbing net



KEY

Younger children play area

- 1 castle play tower with platforms at 1.5m and 1m
- 2 toddler play hut below
- 3 wide stainless steel slide
- 4 draw bridge climbing ramp
- 5 rope hammock
- 6 stepping logs
- 7 scramble net
- 8 log climbing tangle
- 9 cross over traversing ropes
- 10 wobbly belt bridge connects the two play areas

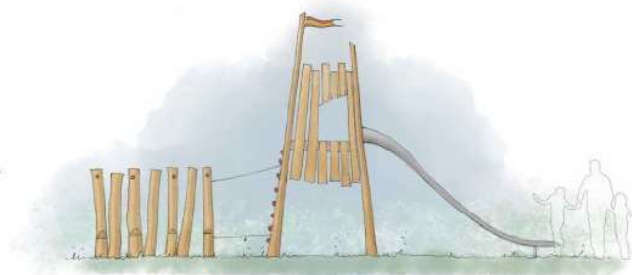
- i - wheelchair accessible picnic bench
- j - picnic bench

biophilia:
**"The innate human
tendency to seek
connections with nature
and other forms of life."**

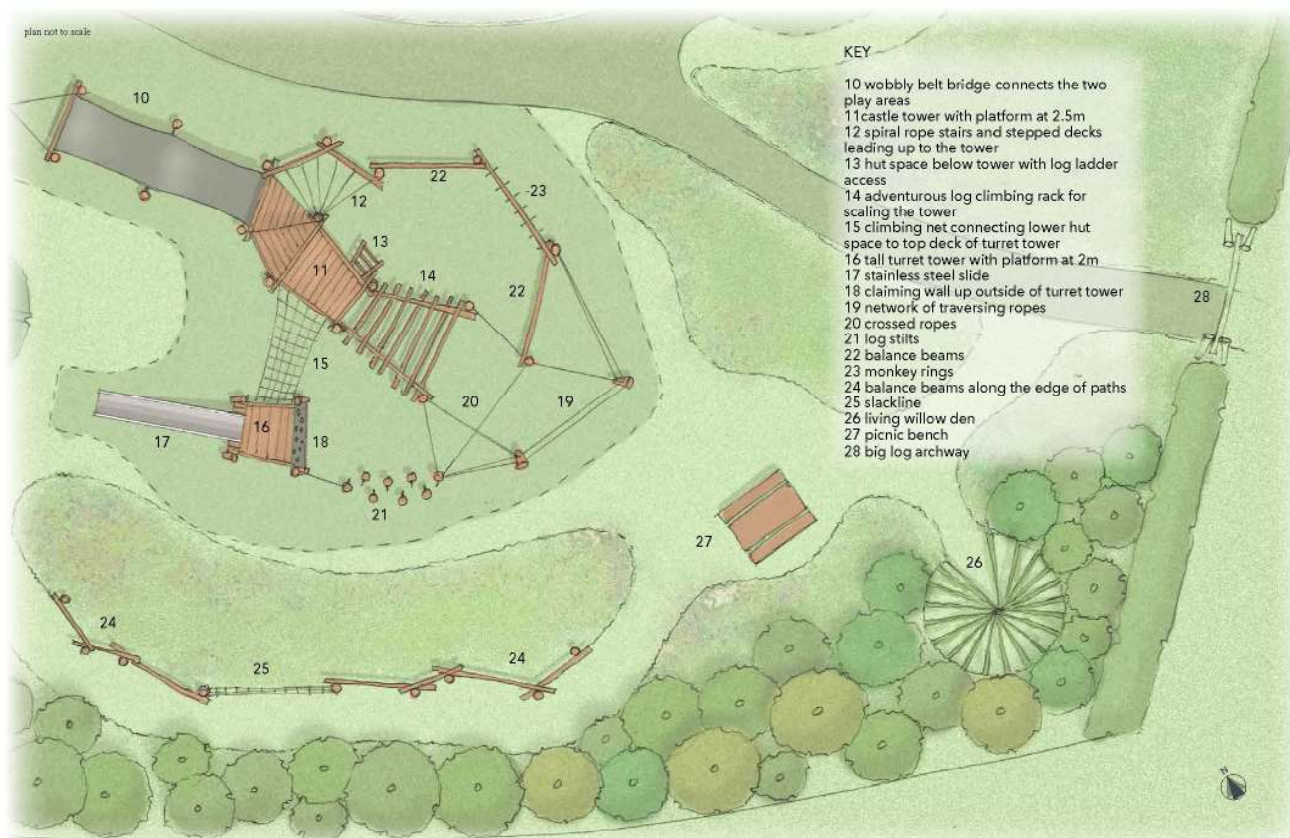
SPACE 2 EQUIPMENT AND LAYOUT



Space 2 - Central space with a focus on older children but also accessible to younger users up to a certain extent.



tall turret tower with rubber flag



big log archway



castle tower with platform at 2.5m

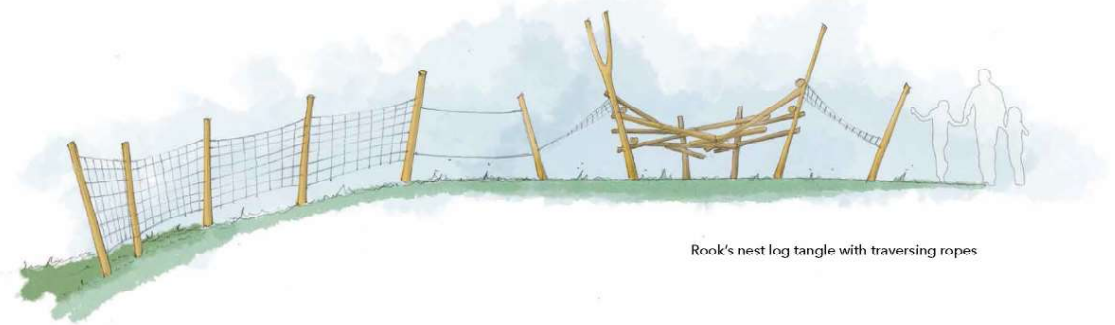
SPACE 3 ROOK'S NEST AREA EQUIPMENT AND LAYOUT



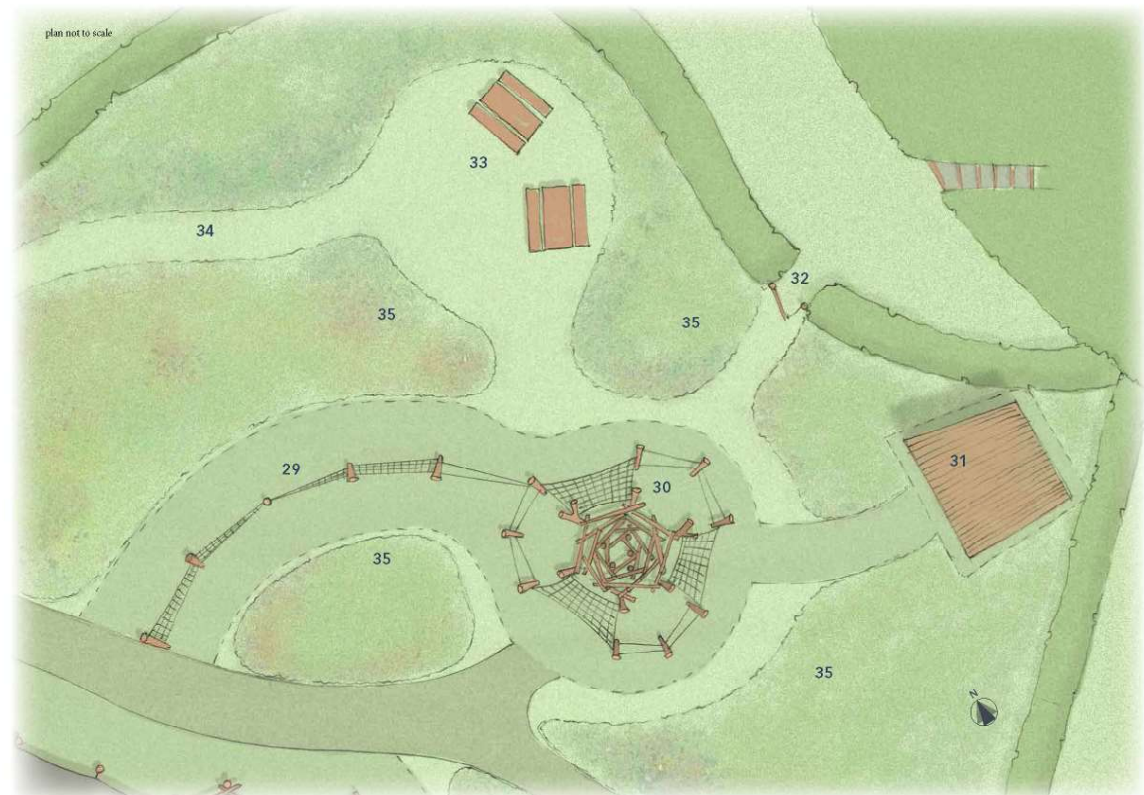
Space 3 - An intricate tangle of timber and netting with a nod to the idea of a rook's nest.

KEY

- 29 routeway of climbing nets that lean in opposite direction from start to end
- 30 rooks nest log tangle surrounded by a web of scramble nets and traversing ropes
- 31 roofed shelter with benches
- 32 wooden gate
- 33 wooden picnic benches
- 34 mown paths 1.2m wide
- 35 areas of long grass and prairie planting



Rook's nest log tangle with traversing ropes





THE MOTTE AND BAILEY PROJECT

